



The Great North Early Years Stronger Practice Hub

November Newsletter



Welcome!

We are thrilled you have joined our Stronger Practice Hub! Throughout our newsletters, we will be signposting many opportunities, including government-funded programmes through the DFE and EEF. Our newsletter will cover how we can help you and your setting through evidence-informed practices. Click below to access the areas of interest.

[Launch Events](#)

[Our Lead School](#)

[DFE Training](#)

[Dates For Your Diary](#)

[EEF Updates](#)

[Evidence-Informed Programmes](#)

Many Thanks!

A huge thank you to everyone who has attended our Great North Early Years Stronger Practice Hub (GNSPH) launch events in person or virtually so far in Northumberland and Durham. It was fantastic to see so many people there and we are looking forward to working with you all. We are holding two more launch events, one for Durham and one for Newcastle! If you or anyone you know would be interested, please share this email with them.

Durham & Newcastle Launch Events

Durham via Zoom.

November 16th, 2023 from 3:30-4:30 pm
or from 6:00-7:00 pm via Zoom.

[Sign up](#)

Newcastle at Welbeck Academy

November 28th, 2023 from 2:30 pm - 4:30 pm at
or virtual from 6:00 pm-7:00 pm via Zoom.

[Sign up](#)

Have you completed our audit?

Your voice is really important to us and is vital to the success of tailoring a SPH CPD offer that is bespoke to the needs of the early years workforce and all children across Northumberland, Durham and Newcastle. We are asking all early years practitioners and professional teams working with children from birth to five, to complete our GNSPH early years provider audit. The information we gather from this audit will inform the contents of the GNSPH CPD offer 2023/24.

[Childminder Audit](#)

[School-based, PVI and Other](#)

Dates for your Diary

In our provider's audit, 70% of you have requested support with SEND and 60% of you would like support with PSED so please join us at the following:

22nd of November, 4:00pm-5:30pm

4th of December, 1:30pm-4:30pm

[Early Identification, Early Action Network
Session at Central Primary School, Ashington](#)

[Social Emotional Learning in Early Years at
Town End Academy, Sunderland](#)

Find out how our strategic partners at Bothal and Central Primary Schools have great success with their EEF evidence-informed practice linked to early identification and action and how to effectively support children with a wide range of needs. This will include networking opportunities and a look around their enabling environments.

Come along to find out about how to improve SEL and PSED in your setting using evidence-informed practice from the EEF evidence store. Hear first-hand from a nursery practitioner who has put several strategies in place to support learners with a wide range of needs. Learn about the impact of these strategies and see how the environment has been designed to support these pupils.

[Sign up](#)

[Sign up](#)

Our Lead Setting - Haltwhistle Academy

Take a look at an overview of our Stronger Practice Hub. Learn more about our lead school, Haltwhistle Academy which is a part of the [WISE Academies Trust](#), and our other strategic partners.








We also work very closely with Town End Research School to help strengthen our evidence-informed knowledge and practices.

[Learn more](#)

DFE Training Programmes

We are proud to signpost all providers to the DFE training packages and support programmes.

Use the guide below to understand which training programme might be the best pathway for you! Learn more about the programmes, or contact us by responding to this email if you are interested in the programme that might be best for you!

	Would you like to...	EYER Programme to consider
	Are you in the early stages of your Early Years career...	Early Years Child Development training
	Are you a Level 3 qualified practitioner...	Early Years Child Development training
	Build on your existing knowledge of child development (ages 2-4) with a focus on supporting early communication and language, early maths and Personal, Social and Emotional Development (PSED).	Professional Development Programme
	Build your knowledge and expertise of performing the SENCO role in Early Years.	L3 Special Educational Needs Coordinator (SENCO) qualification
	Are you a childminder, setting leader or aspiring leader...	Early Years Child Development training
	Develop your expertise in leading high-quality education and care, as well as effective staff and organisational management.	National Professional Qualification in Early Years Leadership
	Access 1-2-1 support from an Early Years expert to help develop your leadership capabilities and mentor support for your practitioners.	Experts and Mentors
	Are you a graduate working in Early Years or considering entering Early Years...	Early Years Initial Teacher Training
	Would you benefit from bespoke advice about which elements of the programme are right for you or your setting...	Contact your local Stronger Practice Hub to discuss the offer and to access support to adopt evidence-based practice improvements and a network for sharing effective practice.

[Learn more](#)

Early Years SENCO Level 3 Qualification

Early Years SENCO Level 3

For a level 3 practitioner in a private, voluntary or independent setting. It is also appropriate for Ofsted-registered childminders and Ofsted-registered childminder agencies.

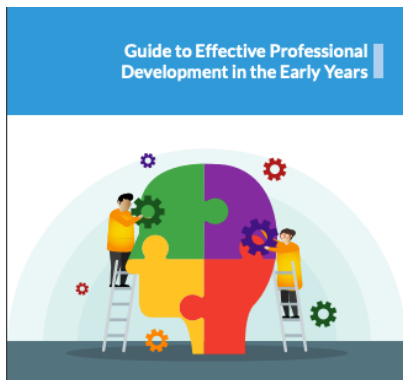
This is an important role to ensure the best possible educational outcomes are achieved for children with special educational needs and disabilities.

Apply by November 19 and start in December



[Learn more](#)

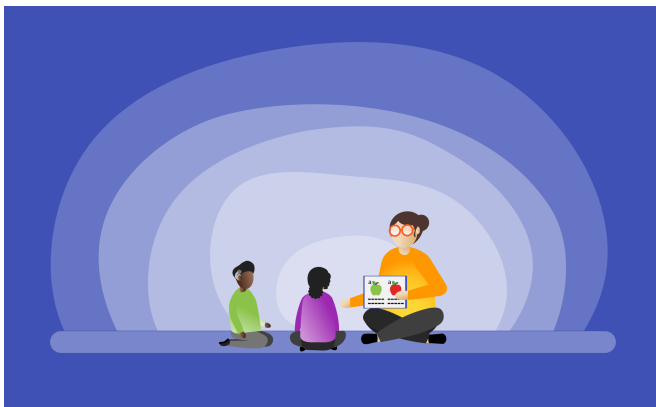
EEF Key Documents



Key Document: Guide to Effective Professional Development in the Early Years

[Access to the guide](#)

New Updates on the Early Years Evidence Store



The EEF has added two brand new themes to its Early Years Evidence Store focusing on early maths and early literacy. The new additions are designed to support early years staff to strengthen their practice and boost learning and development. Each theme summarises evidence-informed approaches and illustrates how they could be put into practice with children in all types of early years settings.

[Explore the Evidence Store](#)

Evidence-Informed Programmes



Elklan - Communication-Friendly Home-Based Settings

Calling all childminders! As part of the Department of Education's Early Years Recovery Programme, we are working with the EEF to fund childminders' access to the CFHBS Programme starting in 2023/24 academic year. We have limited spaces available for January 2024, let us know now if you want to participate!

[Learn more](#)



Maths Champions

The Education Endowment Foundation (EEF) has opened recruitment for early years settings to deliver “Maths Champions”, a programme designed to support young children’s mathematical and language development, at no cost. This programme, developed by the National Day Nurseries Association, delivers high-quality professional development to early years educators to support improvements to early maths provision in PVI, maintained and school-based settings.

[Learn more](#)

We hope you have found some content that can support you within this newsletter. If you are looking for something more specific, don't hesitate to reach out to us directly!

[Get in touch](#)

Has this email been forwarded to you?

Sign up to our newsletter to get them automatically!

[Sign up](#)

Follow us for more updates on social media!



You are receiving this email as you signed up for our newsletters.

[Want to change how you receive these emails?](#)

[You can Unsubscribe or Update your preferences](#)